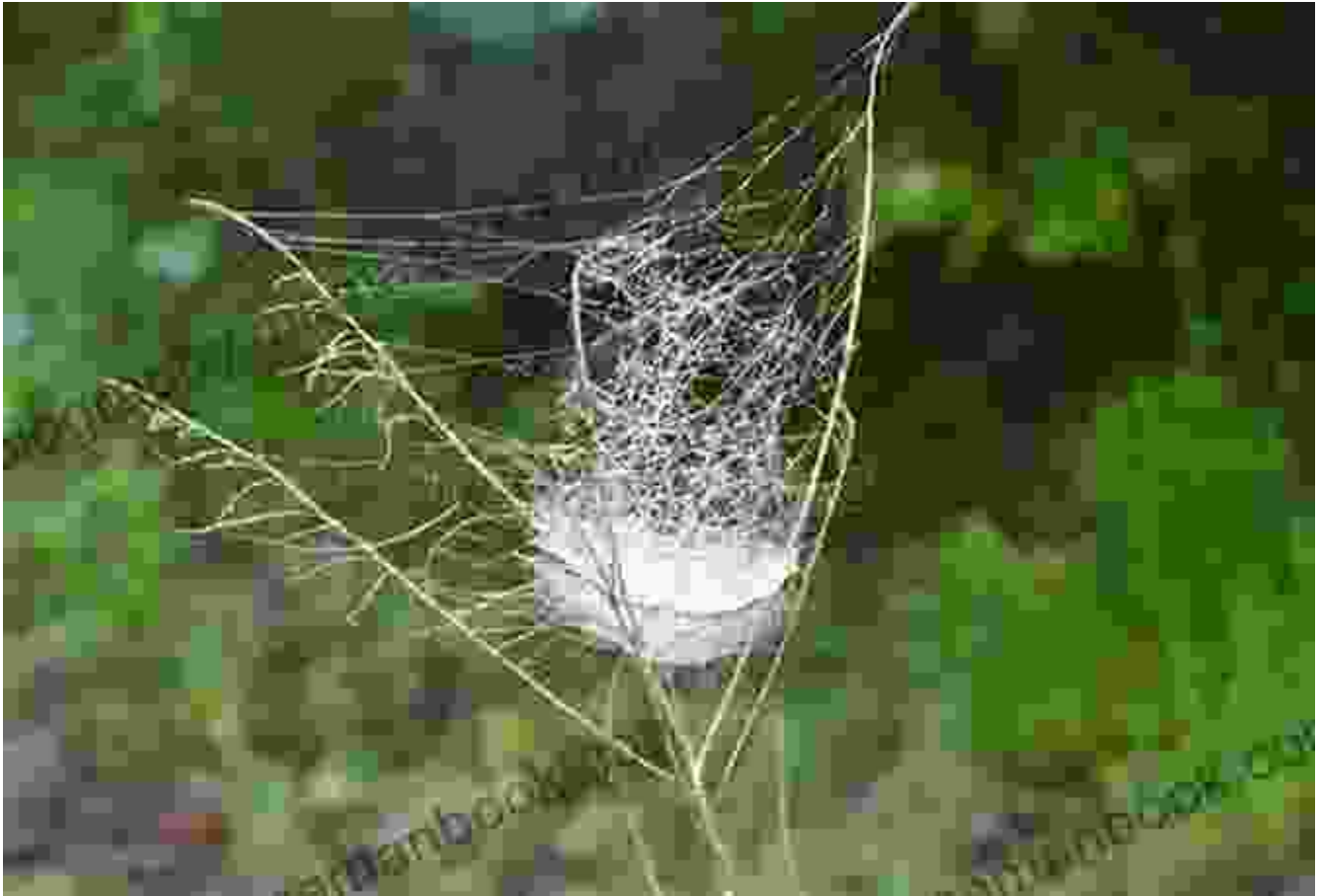


So Spider So What 58: Exploring the Unseen World of Spiders



The world of spiders is a fascinating one, filled with a myriad of creatures that are both beautiful and enigmatic. Often misunderstood and feared, spiders play a vital role in the ecosystem, helping to control insect populations and providing food for other animals. In this article, we will take a closer look at So Spider So What 58, a unique and intriguing species that has captured the interest of scientists and nature enthusiasts alike.



So I'm a Spider, So What? #58.1 by Kenneth Beckman

★★★★★ 5 out of 5



Taxonomy and Description

So Spider So What 58, scientifically known as *Eresus sandaliatus*, is a species of ground-dwelling spider belonging to the family Eresidae. It is found in a wide range of habitats across Europe, North Africa, and the Middle East.

Adult So Spider So What 58 are medium-sized spiders, with females typically measuring around 12-15 mm in length, while males are slightly smaller at 8-10 mm. They have a distinctive appearance, with a dark brown or black body covered in dense, velvety hairs. The legs are long and slender, and the abdomen is adorned with a pair of bright orange or yellow spots.

Habitat and Distribution

So Spider So What 58 is found in a variety of habitats, including grasslands, meadows, and open woodlands. They prefer areas with plenty of ground cover, such as leaf litter or tall grass, where they can build their burrows.

The species has a wide distribution across Europe, North Africa, and the Middle East. It is particularly common in the Mediterranean region, where it can be found in abundance in certain areas.

Behavior and Diet

So Spider So What 58 is a nocturnal hunter, spending the day hidden in its burrow and emerging at night to search for prey. It is an ambush predator, using its camouflaged appearance to lie in wait for unsuspecting insects.

The spider's diet consists primarily of a variety of insects, including flies, beetles, and ants. It uses its powerful venom to paralyze its prey before consuming it whole.

Reproduction and Life Cycle

So Spider So What 58 reaches sexual maturity at around 2 years of age. The mating season typically takes place in the spring or summer months. Males wander in search of females, using their chemoreceptors to detect pheromones released by receptive females.

After mating, the female lays a single egg sac, which she guards fiercely until the eggs hatch. The spiderlings emerge from the egg sac after a few weeks and disperse to find their own territories.

Conservation Status

So Spider So What 58 is a common and widespread species, and it is not considered to be threatened or endangered. However, like many other spider species, it faces potential threats from habitat loss and fragmentation due to human activities.

It is important to protect the habitats where So Spider So What 58 lives, as well as other spider species, to ensure the survival of these fascinating creatures.

So Spider So What 58 is a unique and intriguing spider species that plays a vital role in the ecosystem. Its distinctive appearance, nocturnal behavior, and fascinating life cycle make it a captivating subject for scientists and nature enthusiasts alike. By understanding and appreciating the diversity of spiders, we can work to protect these important creatures for generations to come.



So I'm a Spider, So What? #58.1 by Kenneth Beckman

★★★★★ 5 out of 5





New Translation and Critical Essays: A Comprehensive Analysis

The world of literature is constantly evolving, with new translations and critical essays emerging to shed light on classic and...



Knitting Pattern Kp190 Baby Sleeping Bags Sizes 3mths 6mths 9mths 12mths UK

This easy-to-follow knitting pattern will guide you through the process of creating a cozy and practical sleeping bag for your little one. The sleeping...